

i Step-by-step installation instructions available on page 2 of this datasheet.

Kilargo IFD-LL Series Intumescent Dampers in CSR Hebel 75SS Acoustic Wall system



Drawing Legend

NO.	ITEM DESCRIPTION
1	Kilargo IFD-LL Intumescent Fire Damper Damper fitted in steel sleeve, with 4 self-drilling screws as tested and sealed at the perimeter with item 3.
2	Damper Casing 0.6mm or greater mild steel casing. The aperture shall be a minimum of 10mm and maximum 25mm, filled with sealant (item 3).
3	Kilargo Intumescent Mastic Applied to the perimeter of Kilargo IFD-LL damper and the damper casing (both sides). Applied to the aperture gap between the damper casing and the wall, to the full depth or at least 30mm deep, controlled by a 16mm IBS rod.
4	Steel Angle 0.7mm (min) 40-mm x 40-mm x 25-mm galvanised steel angle steel angles fixed to damper casing with 8g x 65-mm long screws and attached to wall studs with steel fixings.
5	Hebel Wall Systems For 90 min. applications- min. 75mm single reinforced panels tested or assessed for - /90/90. For 120 min. applications - min. 75mm caged reinforced panels tested or assessed for -/120/120.
6	Gaps between damper casing and wall system firestopped with Kilargo intumescent mastic. Max Gap 25mm.
7	For single layer plasterboard lining wall systems, fit an additional layer of plasterboard 200mm wider than damper with laminating screws.

Building element: 75mm Hebel Wall

Application: Sleeve Mounted
Single Sided Angle

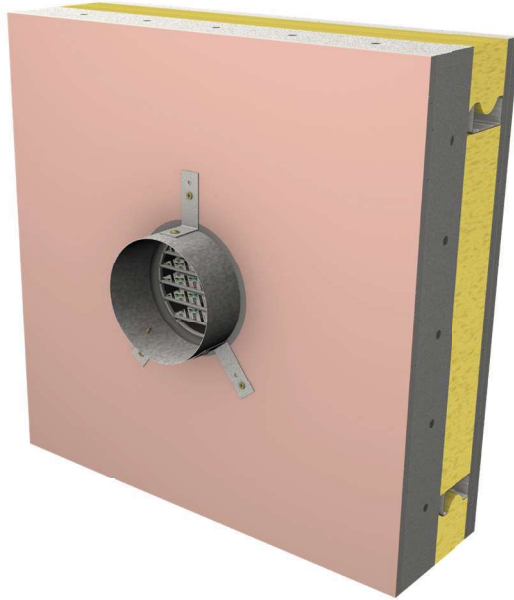
Maximum Size: 350mm Diameter

FRL -/120/120

Test Reference No. FCO-3344

System No. WH2

Product Render: In-situ



Installation Instructions

1. Ensure the wall penetration is sized and formed correctly for the IFD installation as detailed in the System Sheet.
2. For single layer plasterboard lining wall systems, fit an additional layer of plasterboard 200mm wider than damper with laminating screws.
3. Position damper centrally in the penetration as per the System Drawing.
4. Fire-stop any gaps between the casing & building element on both sides, with Kilargo Intumescent Mastic. Ensure fill depth corresponds with those detailed in the System Drawing. Backing material recommended for gaps above 10mm.
5. Fasten supplied steel fixing angles to exterior of sleeve with steel self-drilling screws.
6. Fasten fixing angles to wall using appropriate masonry anchors.
7. Check and re apply any mastic if necessary, ensuring there is a full application as per the System Drawing.

NOTE: Fixings are supplied by others.

System Notes

Kilargo Intumescent Fire Dampers shall be installed in accordance with this detail and in accordance with the requirements of AS1682.2 -Fire & Smoke Dampers. Installation & with note (but not limited to):

1. If connecting ductwork to the installed damper casing, ensure that an appropriate AS1682.2 breakaway joint method is used -refer Clause 6.1(a)
2. Ensure convenient access is provided for visual inspection and cleaning as necessary - refer Clause 6.1(d)
3. Ensure damper labels (product certification labels) are in a prominent position for easy identification during subsequent maintenance inspections - refer Clause 7.2 (b)

Building element:	75mm Hebel Wall
Application:	Sleeve Mounted Single Sided Angle
Maximum Size:	350mm Diameter
FRL	-/120/120
Test Reference No.	FCO-3344

System No. WH2