



THERMAL FLEXIBLE FAN CONNECTOR

THERMAL FLEXIBLE FAN CONNECTOR PRODUCT DESCRIPTION

Bullock thermal flexible fan connector as described is designed to eliminate fan movement or vibrations/noise transferring to sheet metal duct runs or conditioner housings. Designed and tested to AS1530.3 specifically to withstand elevated temperatures in Industrial/Commercial applications.



Various applications

FEATURES

- **Metal:** Edging is of premium grade .6mm galvanised steel
- **Fabric:** Construction is Type E glass fibre continuous filament. The weave pattern is a 4 shaft satin design. The fabric thickness is a nominal 0.46mm with a weight of 543gms. The fabric finish is silicone coated giving the fabric excellent features and benefits.
- Roll-formed "DOUBLE LOOP" locking seam is available in NOTCHED OR PLAIN configuration displaying consistent durable strength and airtight characteristics
- **Tensile Strength:** (fed 191/5102) WARP - 200kg/50mm. WEFT - 150kg/50mm
- **Tongue Tear:** (fed 191/5136) WARP - 45kg/50mm. WEFT - 30kg/50mm
- **Coating Adhesion:** (AS1441.5) - 90N/50mm strip
- **Burst Strength:** 550 p.s.i. (3800 kPa)
- **U.V. Treated:** Yes. Ozone resistant
- **Chemical Resistance:** Resists most acids, alkalis, oils
- **Anti-fungicide treated:** Yes
- **Waterproof:** Yes, Acrylic lacquer coated
- **Airtight:** Yes
- **Joining Adhesive:** High temperature neutral cure silicone equivalent to Rhodorsil RTV-922. For high velocity applications a standard washer/rivet/washer reinforcement maybe require.
- **Colour:** Silver
- **Roll Length:** 20 metres. **Fabric Width:** Standard - 100mm
- **Roll Weights:** TF-50 = 14kgs, TF-75 = 18kgs, TF-100 = 23kg
- **Roll Widths:** TF-50 = 50mm metal. Total Span = 185mm
TF-75 = 75mm metal. Total Span = 230mm
TF-100 = 100mm metal. Total Span = 275mm
- **AWTA Test:** To AS1530.3 7-441673-BN. Dated 25 August 1992
- **Results:** Ignitability Index - 0 Range 0 - 20 Spread of flame Index - 0 Range 0-10
Heat Evolved Index - 0 Range 0 - 10 Smoke Developed Index - 1 Range 0-10
- **Continuous Operating Temperatures:** Base Fabric - 550 Celsius Surface Coating - 230 Degree Celsius



FIGURE - 1
Bolt on type
flange connections



FIGURE - 2
GP 100 with TDF/TDC flange
roll forming connections

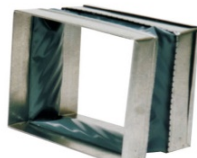


FIGURE - 3
Flat or standup slide
connections



FIGURE - 4
Round or oval raw edge
connections



FIGURE - 5
Plain seam

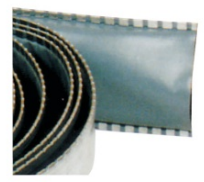


FIGURE - 6
Notched seam

Your local representatives details can be located at www.bullockmfg.com.au

