



BULLOCK

www.bullockmfg.com.au

DUCT HARDWARE - FLANGES, CORNERS, CLIPS, NUTS & BOLTS



Englemate Duct Flange

Roll-formed from premium grade
Galvanised Steel
35mm x 5.8mtr profile Code #1225
25mm x 5.8mtr profile Code #1226



Reinforced Drive Cleat - RDC

3 meter length
20ga roll-formed
Galvanised Steel
Code #1222



J-Cleat Long and J-Cleat Short

0.95mm Galvabond G2 Z275
or 304 Stainless Steel
J-Cleat Long - Code 1229 Ctn Qty 250
J-Cleat Short - Code 1230/1 Ctn Qty 250
304 Stainless Steel - Code #1229/4



35mm Englemate Duct Flange Corners

1.55mm Galvabond G2 Z275
Code #1227/1
Carton quantity 250



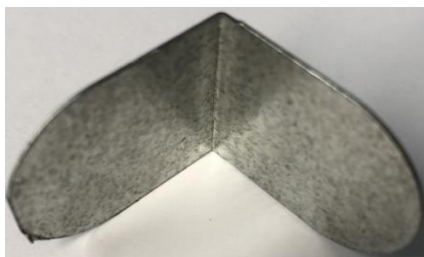
25mm Englemate Duct Flange Corners

1.55mm Galvabond G2 Z275
Code #1228/1
Carton quantity 500



Cuphead Nuts and Bolts

to suit TDF, TDC, 25mm Englemate,
35mm Englemate and Ductmate corners
10mm - Code #1168
8mm - Code #1167



Duct Corners

to suit Drive Slide/Cleat
Quantity 5000 Code #1224
Quantity 1000 Code #1224/1



Flat Slide Cleat

2.44 meter length
20ga roll-formed
Galvanised Steel
Code #1223



J-Cleat Duct Tool Ki-40

Code #1229/2



Corner Crimper

Code #1241

Corner Crimper Repair Kit

Code #1241/1

Your local representatives details can be located at www.bullockmfg.com.au



BULLOCK

www.bullockmfg.com.au



BULLOCK

www.bullockmfg.com.au

DUCT HARDWARE - FLANGES, CORNERS, CLIPS, NUTS & BOLTS



Cornermatic TDF Strapack®
1.55mm Galvabond G2 Z275
Code #1240/Strap
80 per Strap-Pak®



304 SS TDF-Matic Corners
Code #1240/304
316 SS TDF-Matic Corners
Code #1240/316



Cornermatic TDC Strapack®
1.55mm Galvabond G2 Z275
Code #1239/Strap
80 per Strap-Pak®



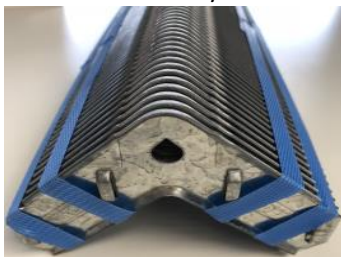
304 SS TDC-Matic Corners
Code #1239/304
316 SS TDC-Matic Corners
Code #1239/316



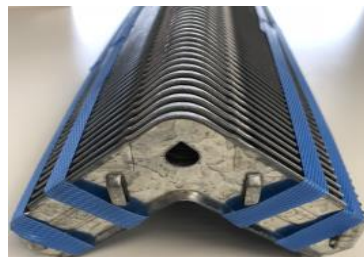
Alum TDF-Matic Corner
Code #1240/AlumTDF



TDC-TDC Clamp
complete with 8mm Nylon Bolt
Code #1390/1



EZ Cornermatic TDF Strapack®
1.55mm Galvabond G2 Z275
Code #1240/EZctnTDFcornermatic
80 per Strap-Pak®



EZ Cornermatic TDC Strapack®
1.55mm Galvabond G2 Z275
Code #1240/EZctnTDFcornermatic
80 per Strap-Pak®



EZ Bolt
1.5 Bolt
Code #1240/EZ1.5Bolt
0.75 Bolt
Code #1240/EZ3/4Bolt



TDC Corner
1.55mm Galvabond G2 Z275
Code #1244/1
Carton quantity 250



TDF Corner
1.55mm Galvabond G2 Z275
Code #1242/1
Carton quantity 250



25mm TDF Corner
1.55mm Galvabond G2 Z275
Code #1243/1
Carton quantity 500

Your local representatives details can be located at www.bullockmfg.com.au



BULLOCK
www.bullockmfg.com.au