



# BULLOCK

[www.bullockmfg.com.au](http://www.bullockmfg.com.au)

## DUCT HARDWARE - FLANGES, CORNERS, CLIPS, NUTS & BOLTS



### Englemate Duct Flange

Roll-formed from premium grade  
Galvanised Steel  
35mm x 5.8mtr profile Code #1225  
25mm x 5.8mtr profile Code #1226



### Reinforced Drive Cleat - RDC

3 meter length  
20ga roll-formed  
Galvanised Steel  
Code #1222



### J-Cleat Long and J-Cleat Short

Galvanised or 304 Stainless Steel  
J-Cleat Long - Code 1229 Ctn Qty 250  
J-Cleat Short - Code 1230/1 Ctn Qty 250  
304 Stainless Steel - Code #1229/4



### Englemate Duct Flange Corners

35mm x 16ga  
Galvanised Steel  
Code #1227/1  
Carton quantity 250



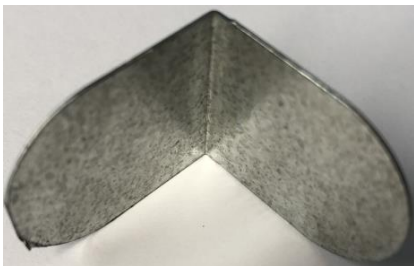
### Englemate Duct Flange Corners

25mm x 16ga  
Galvanised Steel  
Code #1228/1  
Carton quantity 500



### Cuphead Nuts and Bolts

to suit TDF, TDC, 25mm Englemate,  
35mm Englemate and Ductmate corners  
10mm - Code #1168  
8mm - Code #1167



### Duct Corners

to suit Drive Slide/Cleat  
Quantity 5000 Code #1224  
Quantity 1000 Code #1224/1



### Flat Slide Cleat

2.44 meter length  
20ga roll-formed  
Galvanised Steel  
Code #1223



### J-Cleat Duct Tool Ki-40

Code #1229/2



### Corner Crimper

Code #1241

Your local representatives details can be located at [www.bullockmfg.com.au](http://www.bullockmfg.com.au)



**BULLOCK**  
[www.bullockmfg.com.au](http://www.bullockmfg.com.au)



# BULLOCK

[www.bullockmfg.com.au](http://www.bullockmfg.com.au)

## DUCT HARDWARE - FLANGES, CORNERS, CLIPS, NUTS & BOLTS



**Cornermatic TDF Strapack®**  
Code #1240/Strap  
80 per Strap-Pak®



**304 SS TDF-Matic Corners**  
Code #1240/304  
**316 SS TDF-Matic Corners**  
Code #1240/316



**Cornermatic TDC Strapack®**  
Code #1239/Strap  
80 per Strap-Pak®



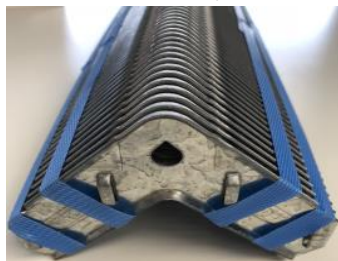
**304 SS TDC-Matic Corners**  
Code #1239/304  
**316 SS TDC-Matic Corners**  
Code #1239/316



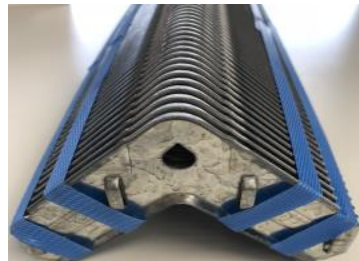
**Alum TDF-Matic Corner**  
Code #1240/AlumTDF



**TDC/TDF Clamp**  
complete with 8mm Nylon Bolt  
Code #1390/1



**EZ Cornermatic TDF Strapack®**  
Code #1240/EZctnTDFcornermatic  
80 per Strap-Pak®



**EZ Cornermatic TDC Strapack®**  
Code #1240/EZctnTDFcornermatic  
80 per Strap-Pak®



**EZ Bolt**  
**1.5 Bolt**  
Code #1240/EZ1.5Bolt  
**0.75 Bolt**  
Code #1240/EZ3/4Bolt



**TDC Corner**  
Code #1244/1  
Carton quantity 250



**TDF Corner**  
Code #1242/1  
Carton quantity 250



**25mm TDF Corner**  
Code #1243/1  
Carton quantity 500

Your local representatives details can be located at [www.bullockmfg.com.au](http://www.bullockmfg.com.au)



**BULLOCK**  
[www.bullockmfg.com.au](http://www.bullockmfg.com.au)